

ENERGY EFFICIENCY

INTERVENTIONS AT NITI AAYOG

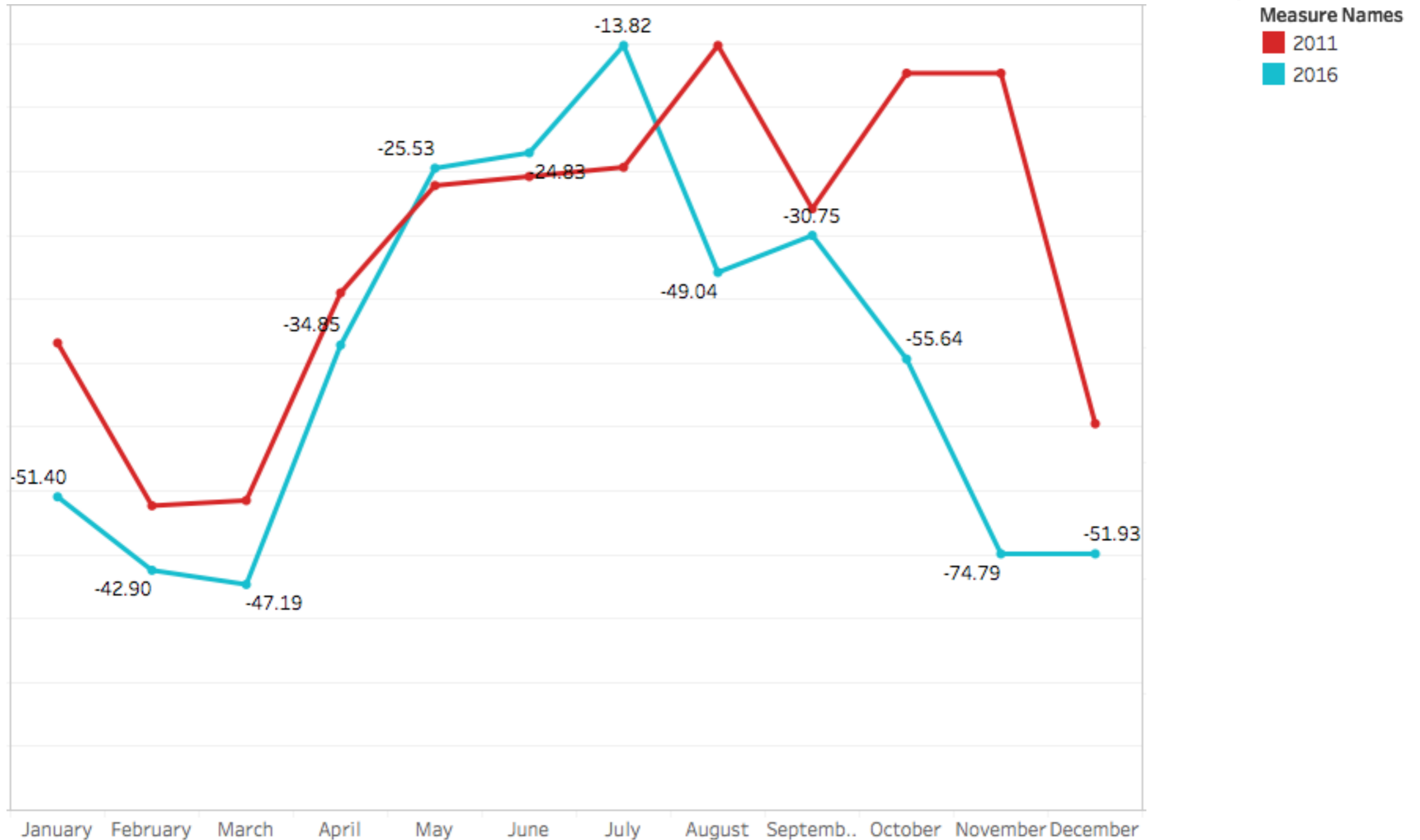
BUILDING OVERVIEW

1	Built up area	23116 sq. m (Ground + 5 floors)
2	Corridor and toilets	4108.7 sq. m
3	Working Area	19007.3 sq. m (out which 80% is conditioned)
4	Energy Performance Index	129.75 kWh/m ² /annum
5	Annual Power Consumption	29.99 lakh units
6	Contract Demand	875.03 KVA
7	No. of DG Sets	2 Nos. x 320 KVA 1 Nos. x 110 KVA 1 Nos. x 100 KVA
8	No. of Transformer	2 Nos. of 1000 KVA each

INTERVENTION 1 - RETROFITTING

- ❑ Project Completion Year - 2014
- ❑ Targeted Area - Fans, Lights, HVAC, Pumps and Power Factor Improvement
- ❑ Expenditure - Rs. 84.60 Lakhs plus 12% service charges plus taxes equals to Rs. 94.75 Lakhs
- ❑ Expected Payback - 1.6 years
- ❑ Total Power Consumption 2011 - 2908005 kwh
- ❑ Total Power Consumption 2016 - 1686816 kwh
- ❑ **Annual Savings (% kwh reduction) – 42%**

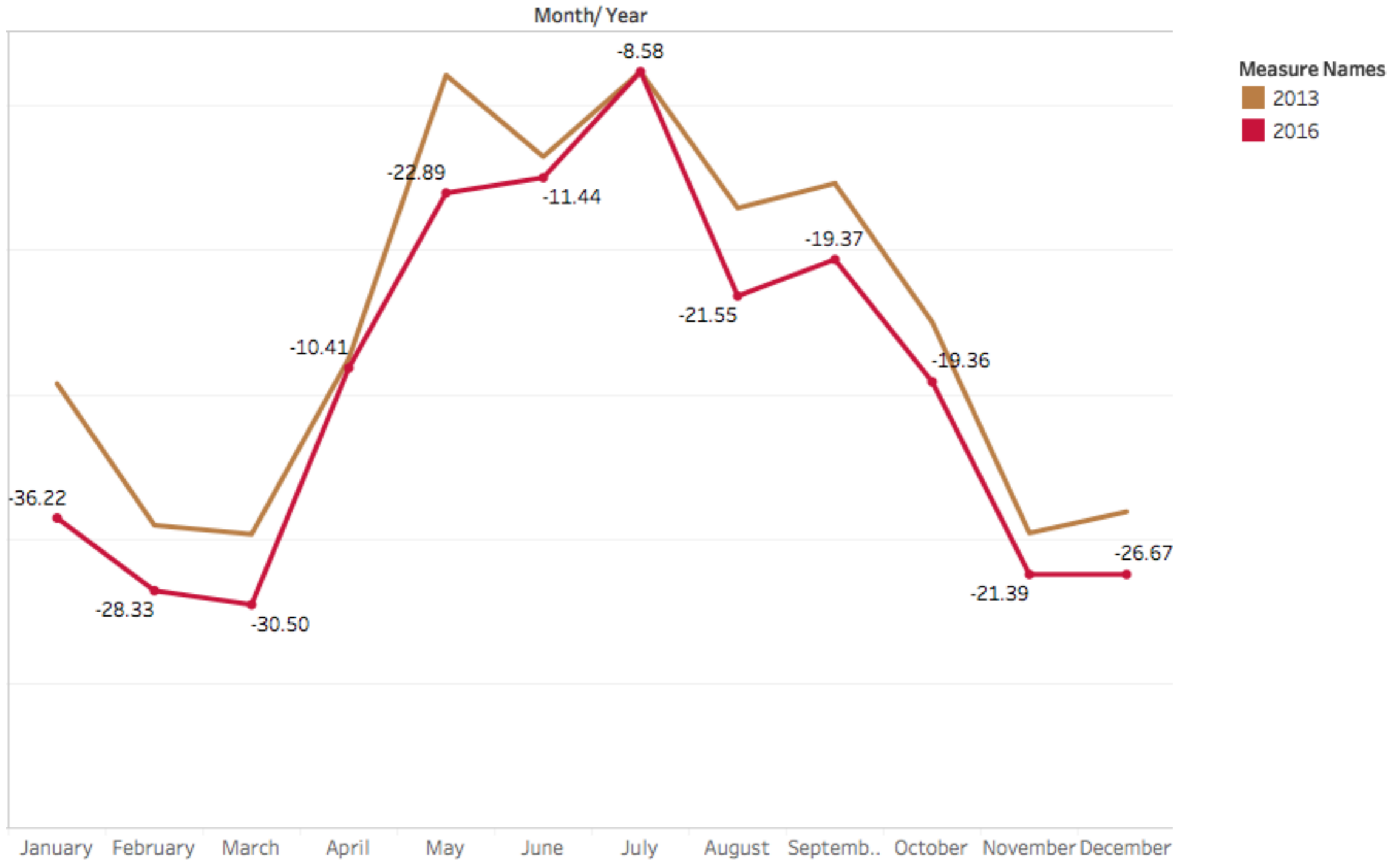
INTERVENTION 1 - ESCO MODEL (RETROFIT)



INTERVENTION 2 - (SOLAR PV INSTALLATION)

- ❑ Project Completion Year - 2014
- ❑ Installed Capacity - 78.24 kWp (Azure Power)
- ❑ Expenditure - Rs. 55,55,040/- + 8% admin charges (80kWp)
- ❑ Subsidy - 30% borne by SECI; Final cost amounts to Rs 38,88,528/-
- ❑ Generation in 2016 - 90453 kWh
- ❑ Estimated Payback - 7 years

INTERVENTION 2 - (SOLAR PV INSTALLATION)



RETROFITTING

❑ PHASE 2

- ❑ Demand saving ESCO model with 100% financing through CPWD
- ❑ Targeted Areas - Old 50 window/ split ACs, 6 old PTAC, leftover corridor & compound lightening and heat resistant screen
- ❑ Progress - Replacement has been completed, Final verification needs to be done.

❑ PHASE 3

- ❑ Air Conditioners which are old and require frequent repairs will be replaced as a part of Energy Efficiency Phase 3.

THANK YOU!
